



Groyle Fleshender

DEMON

Assembly Guide

EXPLANATION OF SYMBOLS USED THROUGHOUT THIS GUIDE:



Special Instructions.
Please read before continuing



Apply Glue Here



Close Up View
-Sometimes used to note important part connections or in conjunction with Special Instructions



Turn part or Assembly around



Step or Model Subassembly Complete
-Good Job!



Optional Assembly
-There are a variety of parts that may be used at this step



READ THIS FIRST: Before assembling your fine-detail resin cast model kit, please read through this assembly guide to familiarize yourself with the steps involved. Fine detail plastic snips or clippers and a hobby knife, should be used to carefully trim the parts from the component frames and to remove resin pour spouts. Occasionally, a small hobby saw should be used to separate large resin parts from thicker frame connections. Take care to work slowly when trimming excess resin from parts, removing a little at a time to avoid damaging the part. It is advised that this step be carried out by an adult, or under adult supervision and that proper safety precautions are taken.

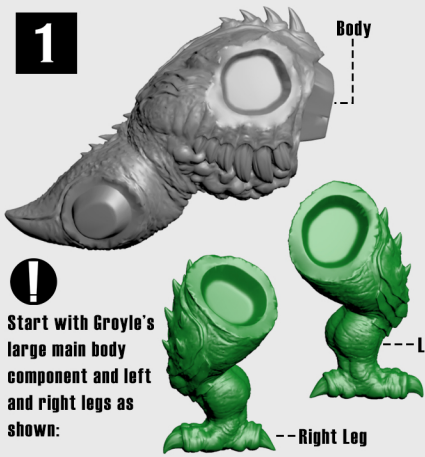
Use a small file, emery board, or fine grit sandpaper to smooth out areas where excess resin has been trimmed away, or to reduce the visibility of mold lines.

It is a good idea to wash your resin parts in a bowl of mild soap and water before gluing or painting any components. This helps to remove dust and dirt, as well as any excess oils that may have accumulated on the parts during storage or trimming.

If you find a part to be warped slightly out of place, use a hair dryer, warm water, or a nesting chicken, to heat the part until the resin becomes slightly flexible. You can then SLOWLY bend the part back into shape. While holding it in place, remove it to cool air or water in order to reset the resin part in the corrected shape.

1

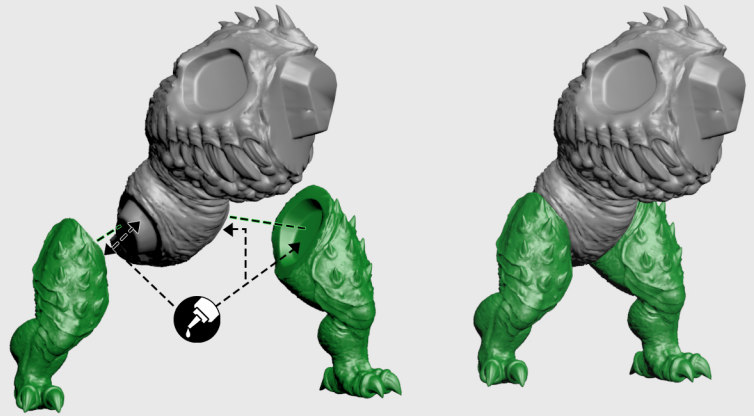
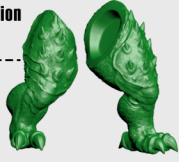
Body



Start with Groyle's large main body component and left and right legs as shown:

!

Components of each assembly step of this guide will be highlighted green to aid instruction

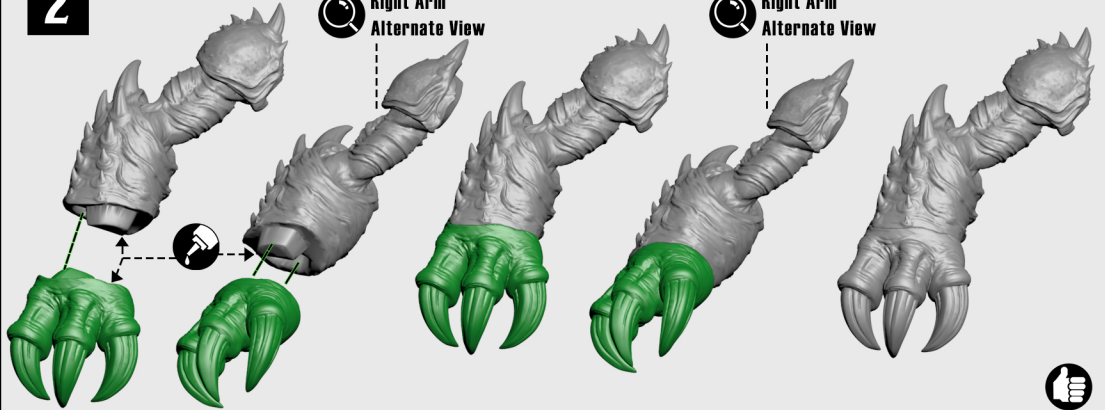


2

Right Arm Assembly

Right Arm Alternate View

Right Arm Alternate View

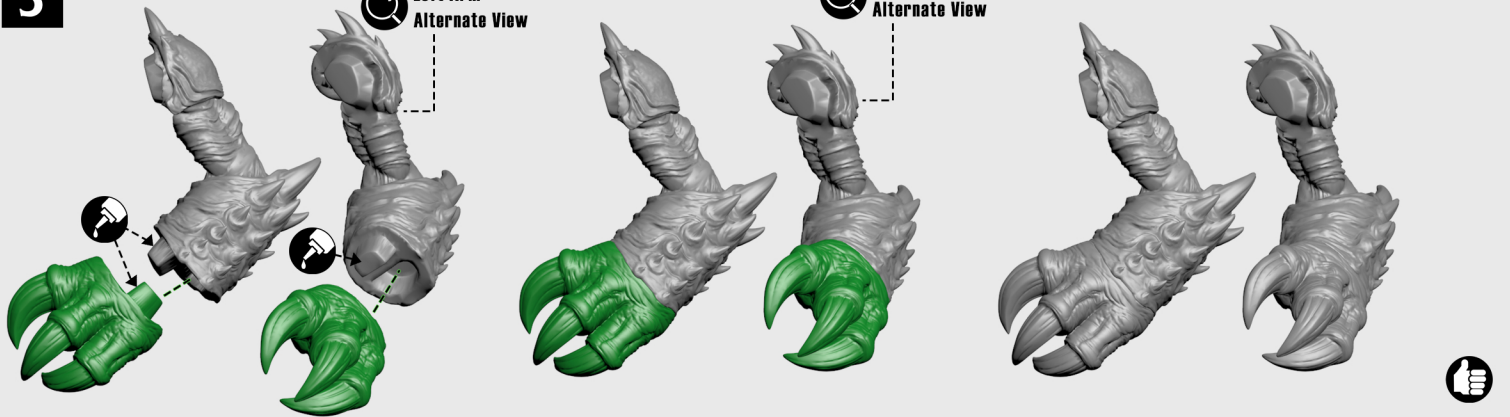


3

Left Arm Assembly

Left Arm Alternate View

Left Arm Alternate View

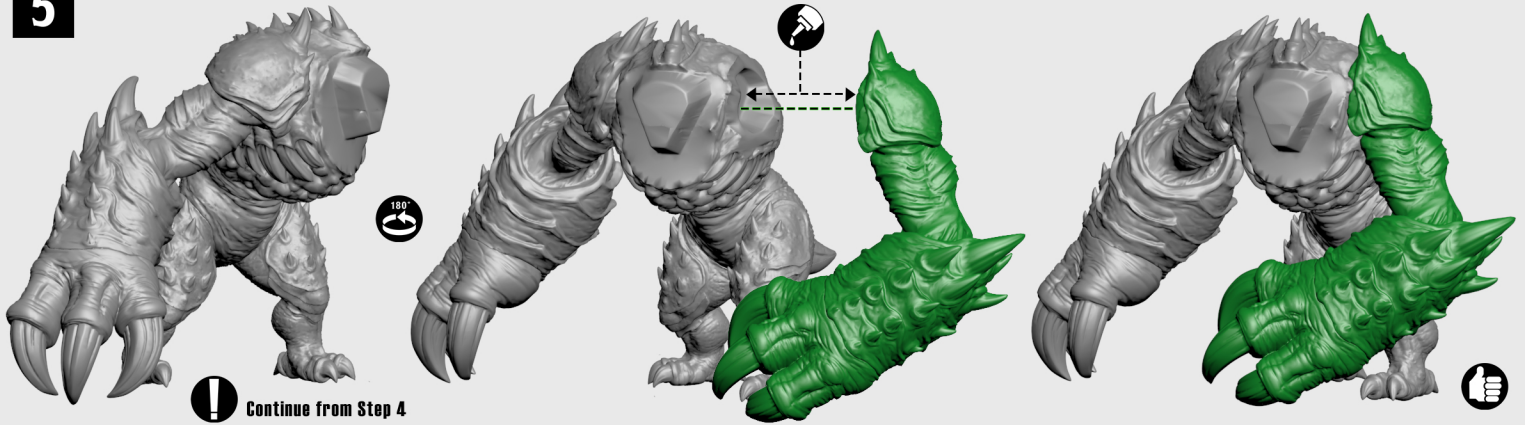


4

Continue from Step 1



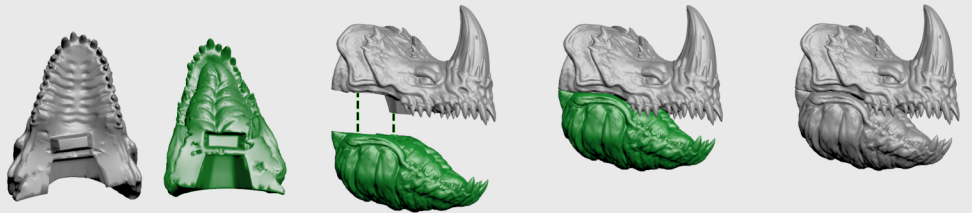
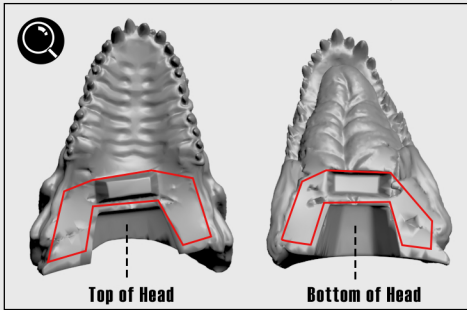
5



6

Head Assembly

Apply glue only to highlighted area for this step



7



8

